



Highbridge & Burnham Station

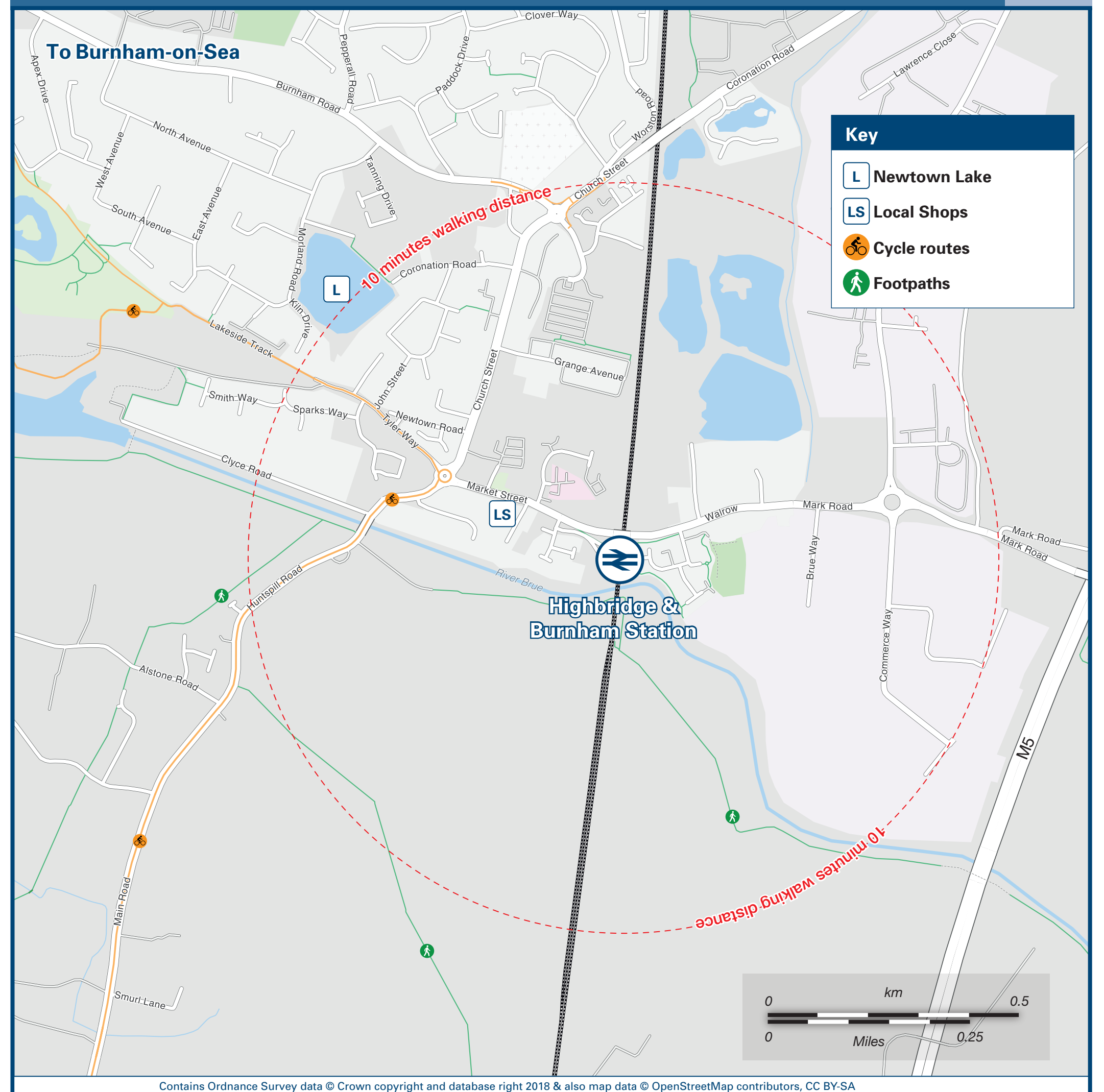
Onward Travel Information

Buses and Taxis



Rail replacement buses/coaches will depart from the front of the station

Local area map



Main destinations by bus

(Data correct at September 2019)

DESTINATION	BUS ROUTES	BUS STOP	DESTINATION	BUS ROUTES	BUS STOP	DESTINATION	BUS ROUTES	BUS STOP
Alstone	21	A	Huntspill	21, 67	A	Wells	67	A
Bridgwater	21	A	Pawlett	21	A	West Huntspill	21	A
Burnham-on-Sea	21, 67	B	Taunton	21	A			
Dunball	21	A	Wedmore	67	A			

Notes

Bus route 21 operates daily. Bus route 67 operates a limited Mondays to Fridays service, only.

For bus times please see bus stop timetables or contact Traveline.

Direct trains operate to this destination from here

Taxis	Highbridge & Burnham station is served by a taxi rank or cab office. Check availability, and pre-book if necessary. Please consider using the following local operators: (Inclusion of this number doesn't represent any endorsement of the taxi firm)	Lydias 01278 794 479	Fairview 01278 794 545	Paul's Taxis 01278 793 879
--------------	--	--------------------------------	----------------------------------	--------------------------------------

Further information about all onward travel

Local Cycle Info somerset.gov.uk For more information about cycle routes.	National Cycle Info sustrans.org.uk Sustrans is the UK's leading sustainable transport charity.	Bus Times See timetable displays at bus stops. www.traveline.info 0871 200 22 33 calls cost 13p per minute plus your phone company's access charge	NextBuses Find the bus times for your stop. Search for a bus stop by entering a postcode, street & town or a stop name & town.	PlusBus plusbus.info A discount price 'bus pass' that you buy with your train ticket. It gives you unlimited bus travel around your chosen town, on participating buses.
---	---	---	--	---

National Rail Enquiries					
Online nationalrail.co.uk	NRE App Free National Rail Enquiries app for iOS and Android	Social Media facebook.com/nationalrailenq @nationalrailenq	Alert Me You can sign up to Alert Me messages on the National Rail Enquiries website where you can receive train and platform notifications directly to your smart phone. nationalrail.co.uk/alertme	Contact Centre 03457 48 49 50 Calls cost no more than calls to geographic numbers (01 or 02) and may be recorded.	PlusBike nationalrail.co.uk/plusbike For more information.



This poster shows details of popular destinations and main, frequent bus routes. Additional services may run, so please check with Traveline or see posters at local bus stops. Whilst considerable care has been taken to ensure the information contained on this poster is correct and accurate, National Rail cannot accept responsibility for any loss or inconvenience caused by any errors or omissions, or for loss, damage, injury or inconvenience relating to the cancellation, alteration, delay or diversion of a service. For any feedback, please e-mail comments@onwardtravelposters.com

Scan this code with your mobile to take this poster with you.