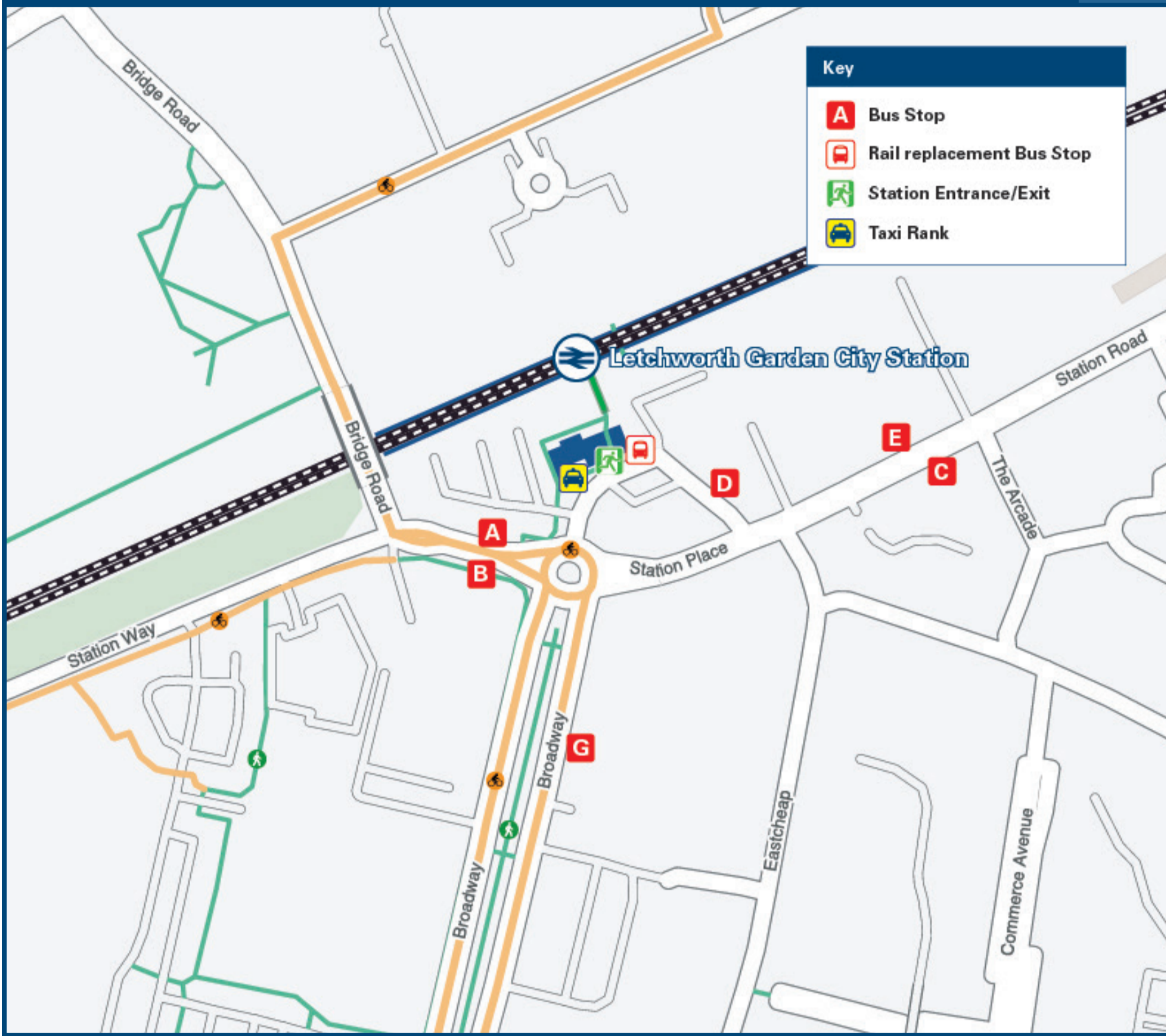




# Letchworth Garden City Station

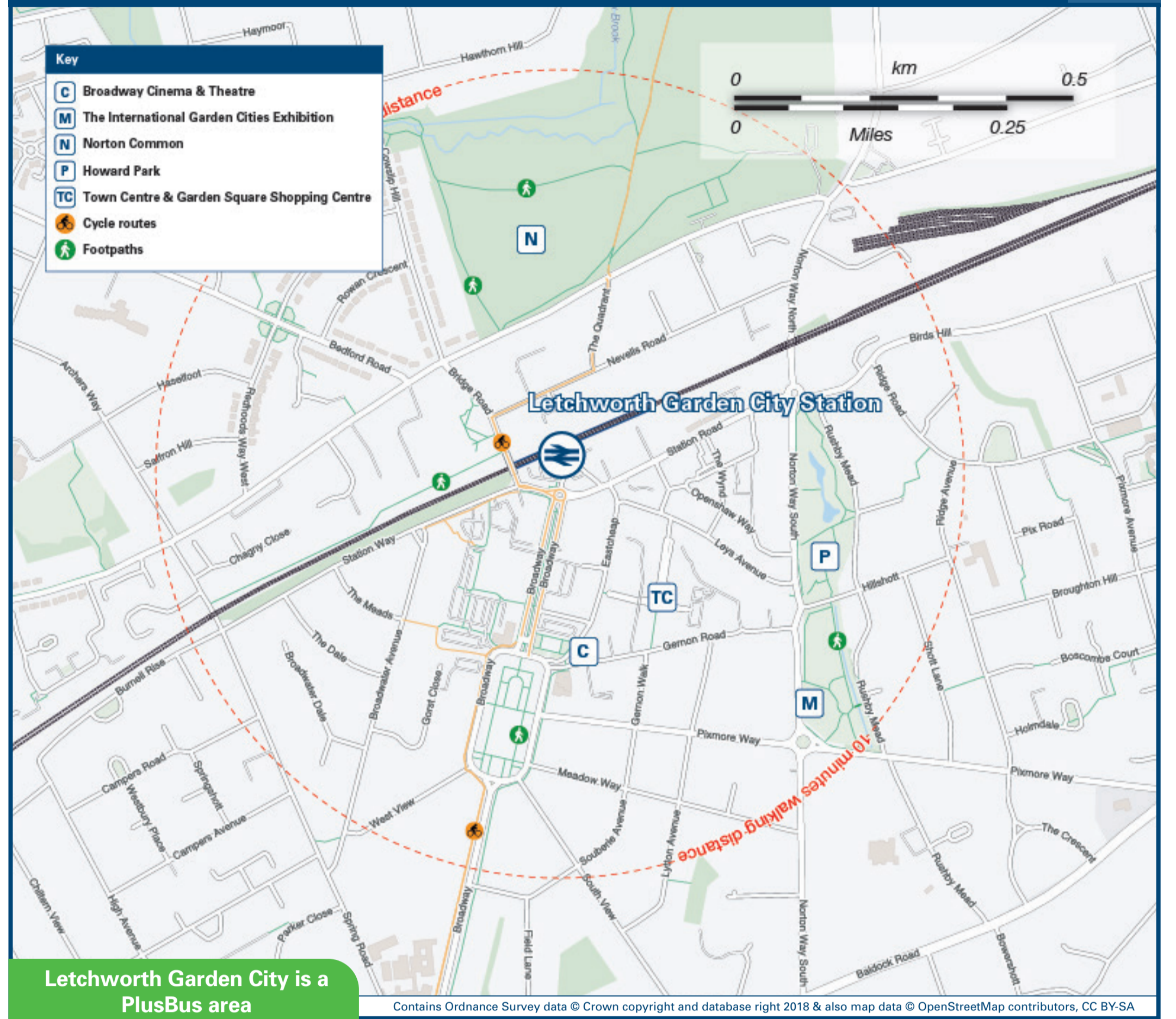
## Onward Travel Information

### Buses and Taxis



Rail replacement buses towards Stevenage and Central London, also towards Cambridge from outside the station entrance, on Station Road.

### Local area map



Letchworth Garden City is a PlusBus area



PlusBus is a discount price 'bus pass' that you buy with your train ticket. It gives you unlimited bus travel around your chosen town, on participating buses. Visit [www.plusbus.info](http://www.plusbus.info)

### Main destinations by bus

(Data correct at August 2020)



DESTINATION	BUS ROUTES	BUS STOP
Arlesey	96, 96A	D
Ashwell Village	91	E
● Baldock	91, 98, 386	E
Bishops Stortford	386	E
Buntingford	386	E
● Clothall Common	91	E
Cottered	386	E
Fairfield Park	97	A
● Grange Estate	55	C G
Graveley	55	C G
Hitchin	386	C
	97, 98	B
● Jackmans Estate	55	C G

DESTINATION	BUS ROUTES	BUS STOP
Lister Hospital (Stevenage)	55, 386	C G
Little Hadham	386	E
● Lordship Estate	53	D
Newnham	91	E
● Norton	96A	D
Odsey (for Ashwell & Morden Railway Station)	91	E
Puckeridge	386	E
● Radwell Lane	91	E
Royston	91	E
Standon	386	E
Stevenage	55, 386	C G
Stevenage Old Town	55, 386	C G

DESTINATION	BUS ROUTES	BUS STOP
● Stofold	96, 96A	D
	97	A
Westmill (near Buntingford)	386	E
Wilbury Hills	53, 96	D B
	97	A

**Notes**

- PlusBus destination, please see below for details
- Bus routes 96, 96A & 97 operate limited Mondays to Fridays services, only. No Saturday or Sunday services or Bank Holiday services.
- Bus route 386 operates a limited Mondays to Saturdays service, only. No Sunday or Bank Holiday services.
- Bus routes 53, 91 and 98 operate Mondays to Saturdays services, only. No Sunday or Bank Holiday services.
- Bus route 55 operates a daily service.
- For all bus times and days of operation please see bus stop timetables or contact Traveline.
- ☺ Direct trains operate to this destination from this station.

**Taxis**

Letchworth Garden City station is served by a taxi rank or a cab office. Check availability before travelling, and pre-book if necessary. Please consider the following local operators: (Inclusion of this number doesn't represent any endorsement of the taxi firm)

**Central Taxicab Letchworth**  
01462 290 000

**Eurocabs**  
01462 600 700

**Gary's Taxis**  
01462 484 888

### Further information about all onward travel

<b>Local Cycle Info</b> <a href="http://north-herts.gov.uk">north-herts.gov.uk</a> <small>For more information about cycle routes.</small>	<b>National Cycle Info</b> <a href="http://sustrans.org.uk">sustrans.org.uk</a> <small>Sustrans is the UK's leading sustainable transport charity.</small>	<b>Bus Times</b> <small>See timetable displays at bus stops.</small>  <a href="http://www.traveline.info">www.traveline.info</a> <b>0871 200 22 33</b> <small>calls cost 12p per minute plus your phone company's access charge</small>	<b>NextBuses</b>  <b>Find the bus times for your stop.</b> <small>Search for a bus stop by entering a postcode, street &amp; town or a stop name &amp; town.</small>	<b>PlusBus</b> <a href="http://plusbus.info">plusbus.info</a> <small>A discount price 'bus pass' that you buy with your train ticket. It gives you unlimited bus travel around your chosen town, on participating buses.</small>
--	--	--	---	--

### National Rail Enquiries

<b>Online</b> <a href="http://nationalrail.co.uk">nationalrail.co.uk</a>	<b>NRE App</b> <b>Free National Rail Enquiries app for iOS and Android</b>	<b>Social Media</b> <a href="https://www.facebook.com/nationalrailenq">facebook.com/nationalrailenq</a> @nationalrailenq	<b>Alert Me</b> <small>You can sign up to Alert Me messages on the National Rail Enquiries website where you can receive train and platform notifications directly to your smart phone.</small> <a href="http://nationalrail.co.uk/alertme">nationalrail.co.uk/alertme</a>	<b>Contact Centre</b> <b>03457 48 49 50</b> <small>Calls cost no more than calls to geographic numbers (01 or 02) and may be recorded.</small>	<b>PlusBike</b> <a href="http://nationalrail.co.uk/plusbike">nationalrail.co.uk/plusbike</a> <small>For more information.</small>
---	---	--	--	--	---

Great Northern



**National Rail**  
Britain's train companies working together



This poster shows details of popular destinations and main, frequent bus routes. Additional services may run, so please check with Traveline or see posters at local bus stops. Whilst considerable care has been taken to ensure the information contained on this poster is correct and accurate, National Rail cannot accept responsibility for any loss or inconvenience caused by any errors or omissions, or for loss, damage, injury or inconvenience relating to the cancellation, alteration, delay or diversion of a service. For any feedback, please e-mail [comments@onwardtravelposters.com](mailto:comments@onwardtravelposters.com)

Scan this code with your mobile to take this poster with you.