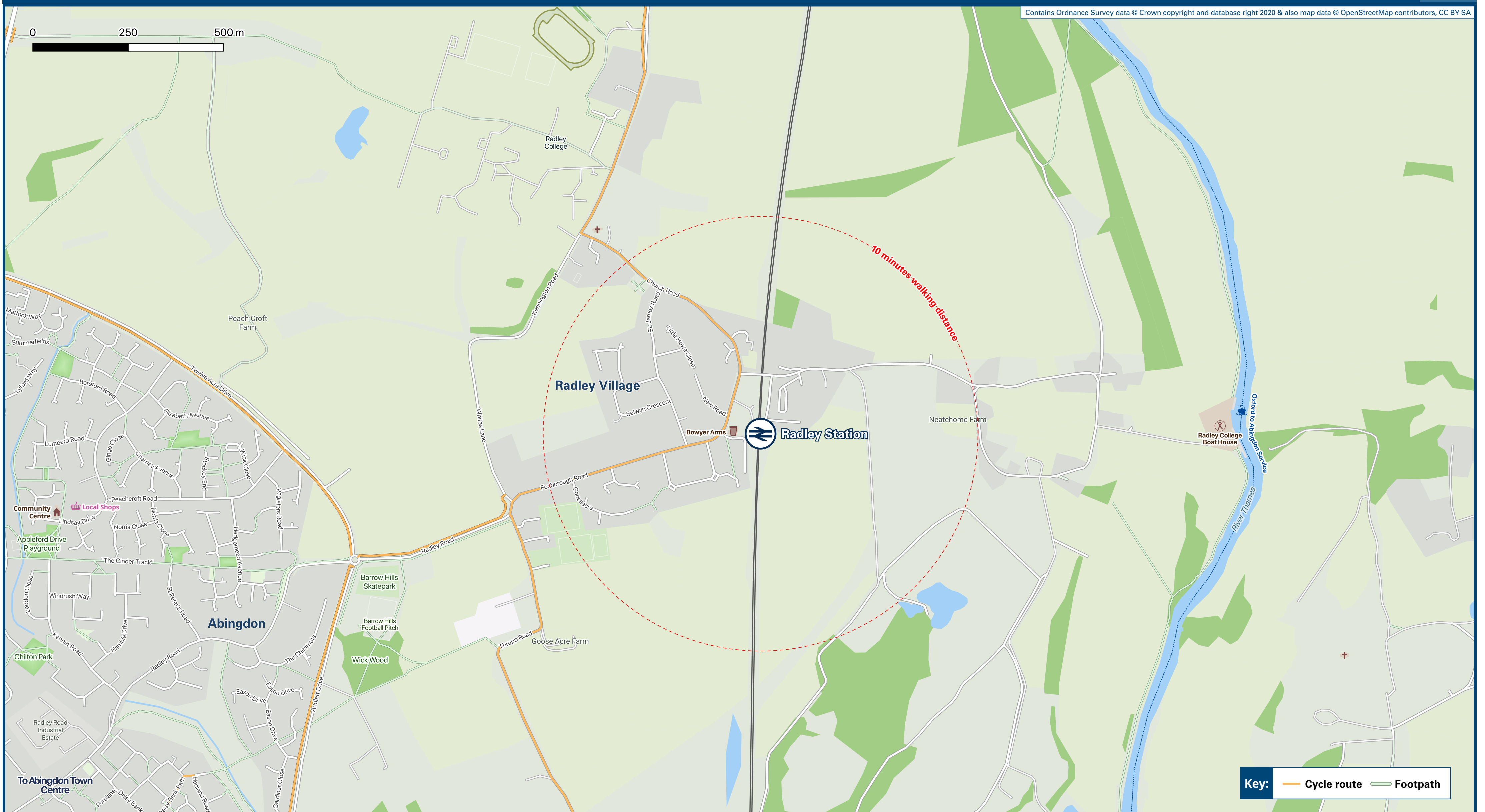




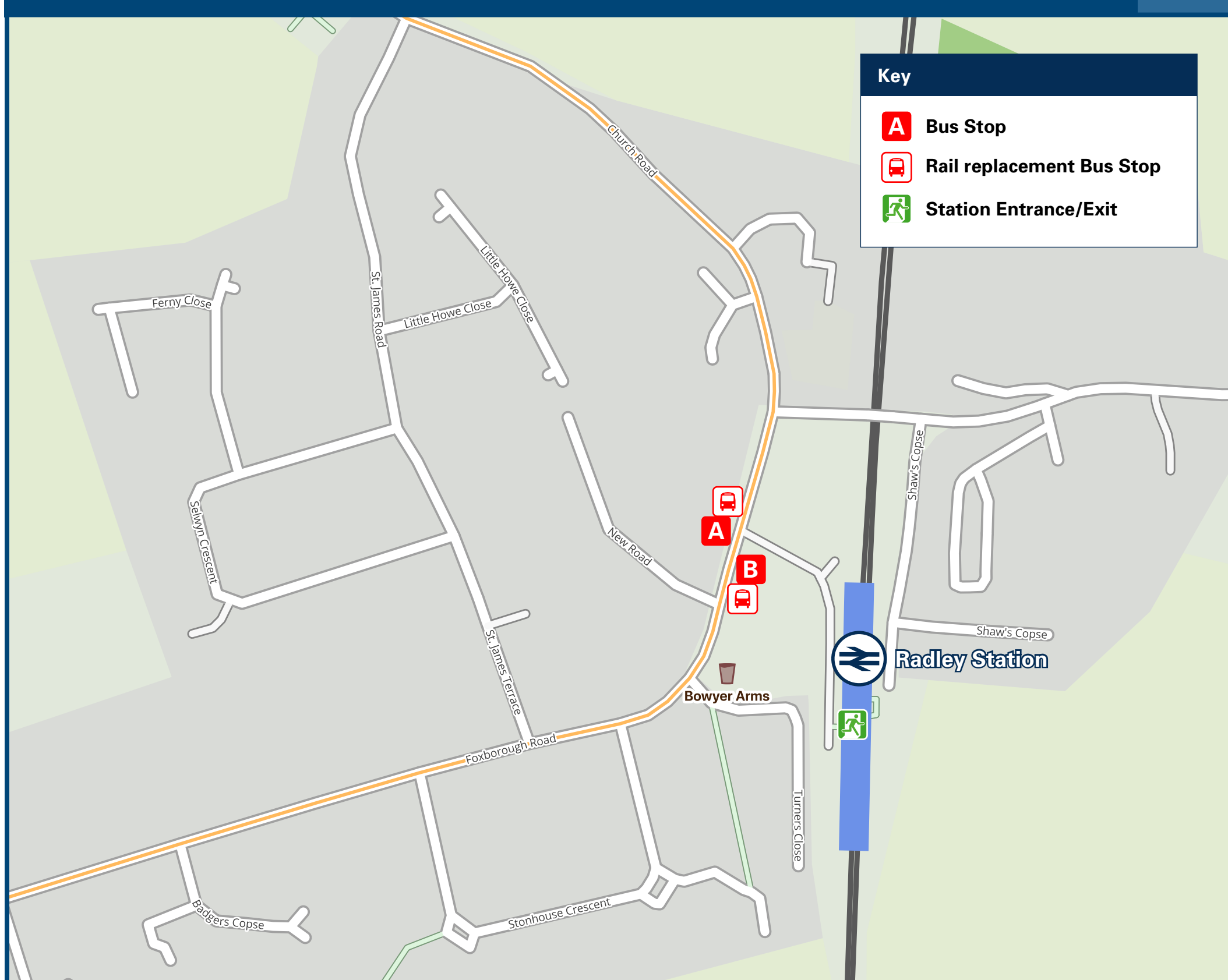
# Radley Station

# Onward Travel Information

## Local area map



## Buses



Rail replacement buses/coaches depart from bus stops at the station entrance near The Bowyer Arms Public House.

## Main destinations by bus

(Data correct at December 2020)

DESTINATION	BUS ROUTES	BUS STOP
Abingdon (Radley Road)	35	B
Abingdon (Town Centre)	35	B
Kennington	35	A
Oxford (Abingdon Road)	35	A
Oxford City Centre (Westgate Shops)	35	A
Pebble Hill Mobile Park	35	A
Radley College	15 minutes walk from this Station	
Sugworth Crescent (Kennington Road)	35	A

**Notes**

- Bus route 35 operates daily.
- For bus times and the latest bus service information, please contact Traveline on 0871 200 22 33 or contact the bus operator (see below):
- Oxford Bus Company (for bus route 35) call 01865 785 400.
- Direct trains operate to Oxford from Radley station

## Taxis

Radley station has no taxi rank or cab office. Advance booking is essential, please consider using the following local operators: (Inclusion of this number doesn't represent any endorsement of the taxi firm)

**AAA Pukka Taxis**  
01235 528 818

**Su's Taxis**  
01235 554 085

**Thames Valley Taxis**  
07756 933 855

## Further information about all onward travel

<b>Local Cycle Info</b> oxfordshire.gov.uk For more information about cycle routes.	<b>National Cycle Info</b> sustrans.org.uk Sustrans is the UK's leading sustainable transport charity.	<b>Bus Times</b> See timetable displays at bus stops. traveline public transport info www.traveline.info 0871 200 22 33 calls cost 12p per minute plus your phone company's access charge	<b>NextBuses</b> .mobi Download on the App Store Find the bus times for your stop. Search for a bus stop by entering a postcode, street & town or a stop name & town.	<b>PlusBus</b> plusbus.info A discount price 'bus pass' that you buy with your train ticket. It gives you unlimited bus travel around your chosen town, on participating buses.
---	--	--	--	---

## National Rail Enquiries

<b>Online</b> nationalrail.co.uk	<b>NRE App</b> Free National Rail Enquiries app for iOS and Android	<b>Social Media</b> facebook.com/nationalraileng @nationalraileng	<b>Alert Me</b> You can sign up to Alert Me messages on the National Rail Enquiries website where you can receive train and platform notifications directly to your smart phone. nationalrail.co.uk/alertme	<b>Contact Centre</b> 03457 48 49 50 Calls cost no more than calls to geographic numbers (01 or 02) and may be recorded.	<b>PlusBike</b> nationalrail.co.uk/plusbike For more information.
-------------------------------------	--	---	---	--	---



This poster shows details of popular destinations and main, frequent bus routes. Additional services may run, so please check with Traveline or see posters at local bus stops. Whilst considerable care has been taken to ensure the information contained on this poster is correct and accurate, National Rail cannot accept responsibility for any loss or inconvenience caused by any errors or omissions, or for loss, damage, injury or inconvenience relating to the cancellation, alteration, delay or diversion of a service. For any feedback, please e-mail comments@onwardtravelposters.com

Scan this code with your mobile to take this poster with you.