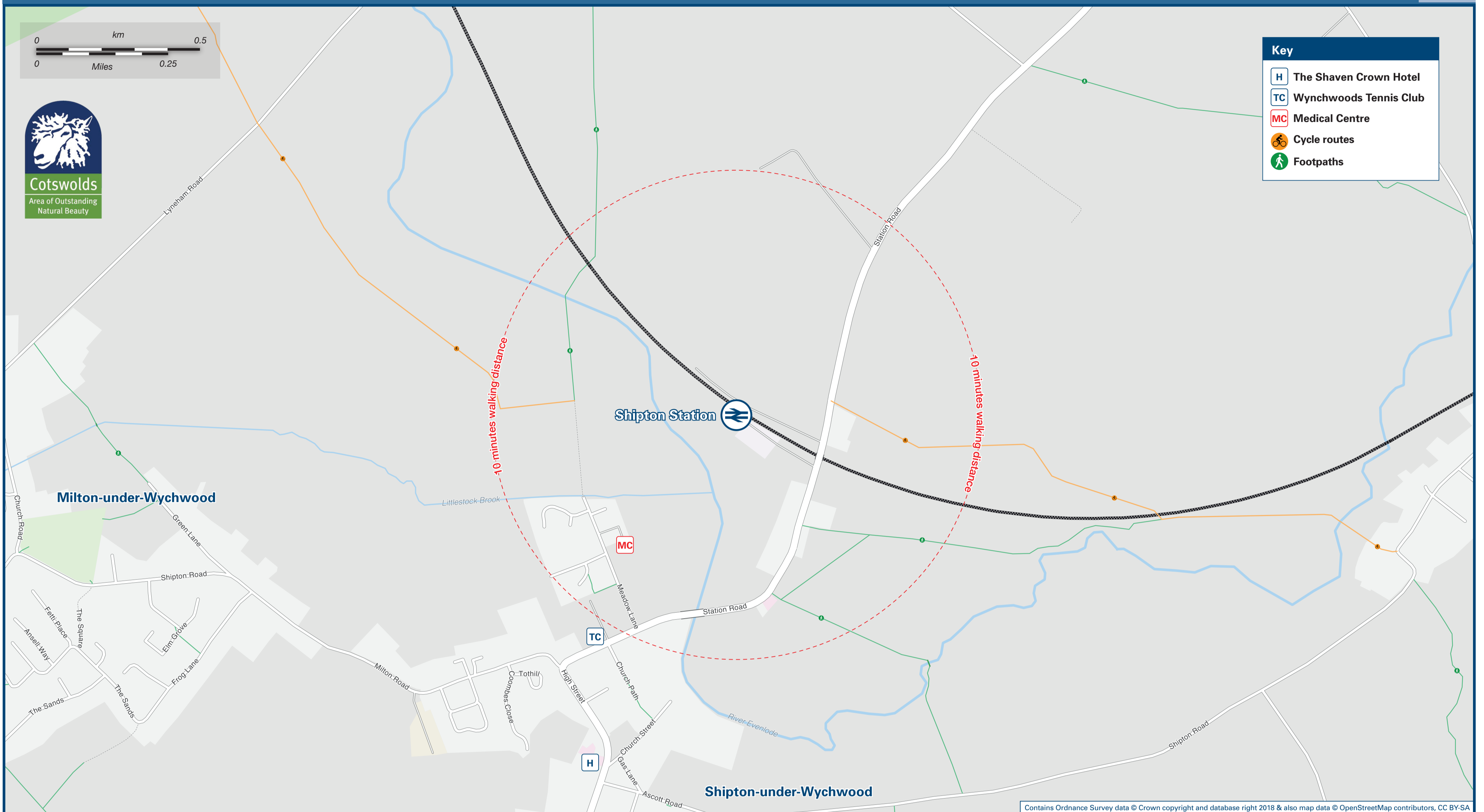




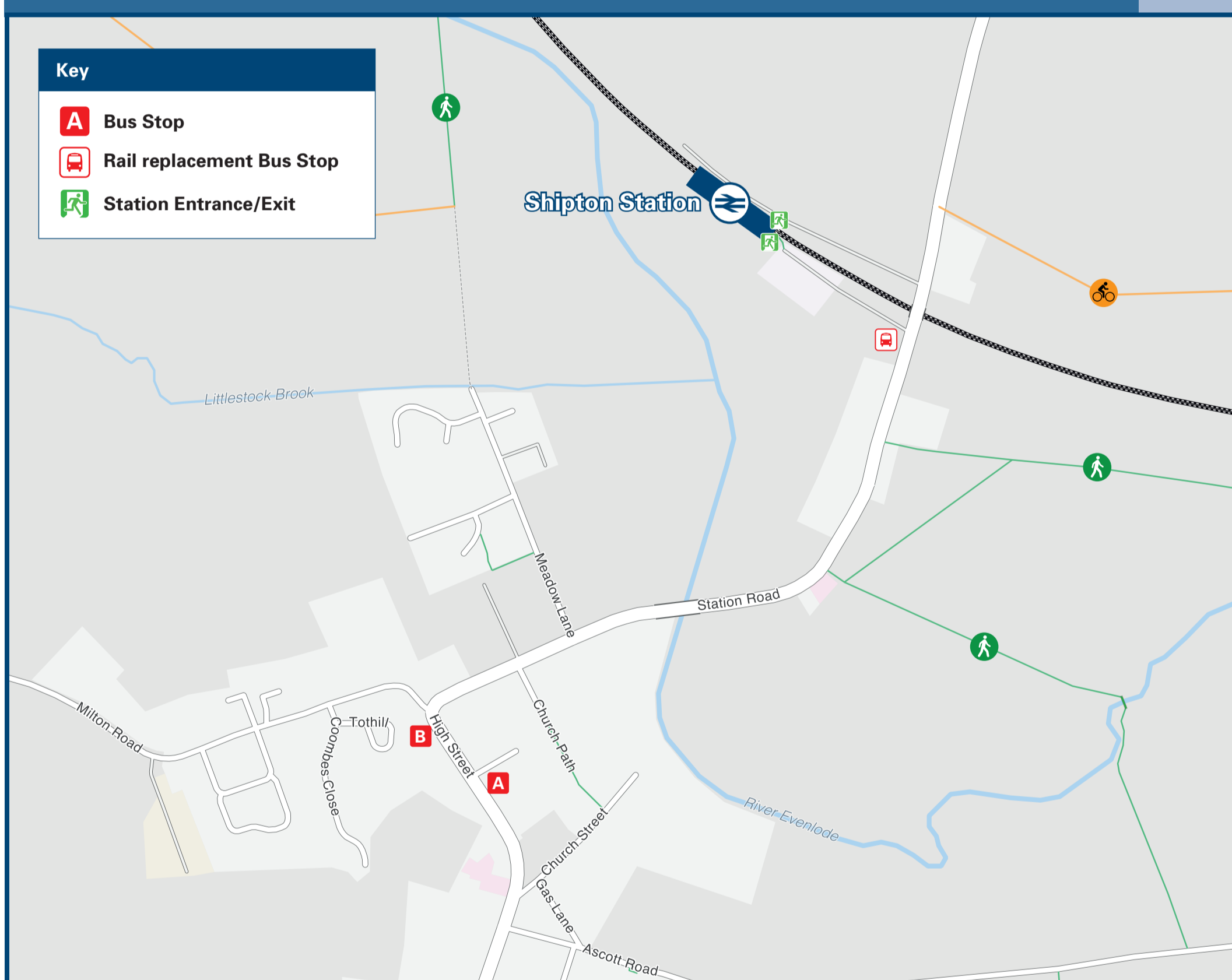
Shipton Station

Onward Travel Information

Local area map



Buses



Rail replacement buses/coaches depart from the bus lay-by at the top of the station drive, at the entrance to the station.

Main destinations by bus

(Data correct at September 2019)

DESTINATION	BUS ROUTES	BUS STOP
Ascott-under-Wychwood	210, V12, V19, V23	A
Bledington	V19, V20, V23, V25	B
Chipping Norton	V12, V19	A
Crawley	210, V21, V23	A
Leaffield	210, V21, V23	A
Lyneham	V19, V23	B
Milton-under-Wychwood	210, V12, V19, V20, V21, V23	B
Upper Oddington	V12, V21, V23	B
Witney	210, V20, V21, V23, V25	A

Notes

Bus route 210 operates 6 journeys on Mondays to Fridays only. Telephone West Oxfordshire Community Transport for more information on 01933 630 124.
 Bus route V12 operates 1 journey on Fridays only.
 Bus route V19 operates 1 journey on Mondays and Tuesdays only.
 Bus routes V20 and V23 operate 1 journey on Thursdays only.
 Bus routes V21 and V25 operate 1 journey on Wednesdays only.
 The Villager Bus routes also call at additional places en route, for more information telephone 01608 658 579.
 For all bus times please call the bus operator or Traveline on 0871 200 2233.
 AONB Cotswolds (AONB) www.cotswoldaonb.org.uk

Taxis

Shipton station has no taxi rank or cab office. Advance booking is essential, please consider using the following local operators: (Inclusion of this number doesn't represent any endorsement of the taxi firm)

Bobby's Taxis
07828 158 686

Charlbury Taxis
07855 806 102

Chipping Norton Taxis
07492 300 001

Further information about all onward travel

Local Cycle Info oxfordshire.gov.uk For more information about cycle routes.	National Cycle Info sustrans.org.uk Sustrans is the UK's leading sustainable transport charity.	Bus Times See timetable displays at bus stops. www.traveline.info 0871 200 22 33 <small>calls cost 12p per minute plus your phone company's access charge</small>	NextBuses Find the bus times for your stop. Search for a bus stop by entering a postcode, street & town or a stop name & town.	PlusBus plusbus.info A discount price 'bus pass' that you buy with your train ticket. It gives you unlimited bus travel around your chosen town, on participating buses.
---	---	--	--	--

National Rail Enquiries

Online nationalrail.co.uk	NRE App Free National Rail Enquiries app for iOS and Android	Social Media facebook.com/nationalrailenq @nationalrailenq	Alert Me You can sign up to Alert Me messages on the National Rail Enquiries website where you can receive train and platform notifications directly to your smart phone. nationalrail.co.uk/alertme	Contact Centre 03457 48 49 50 Calls cost no more than calls to geographic numbers (01 or 02) and may be recorded.	PlusBike nationalrail.co.uk/plusbike For more information.
---	--	--	---	--	--



National Rail
Britain's train companies working together

