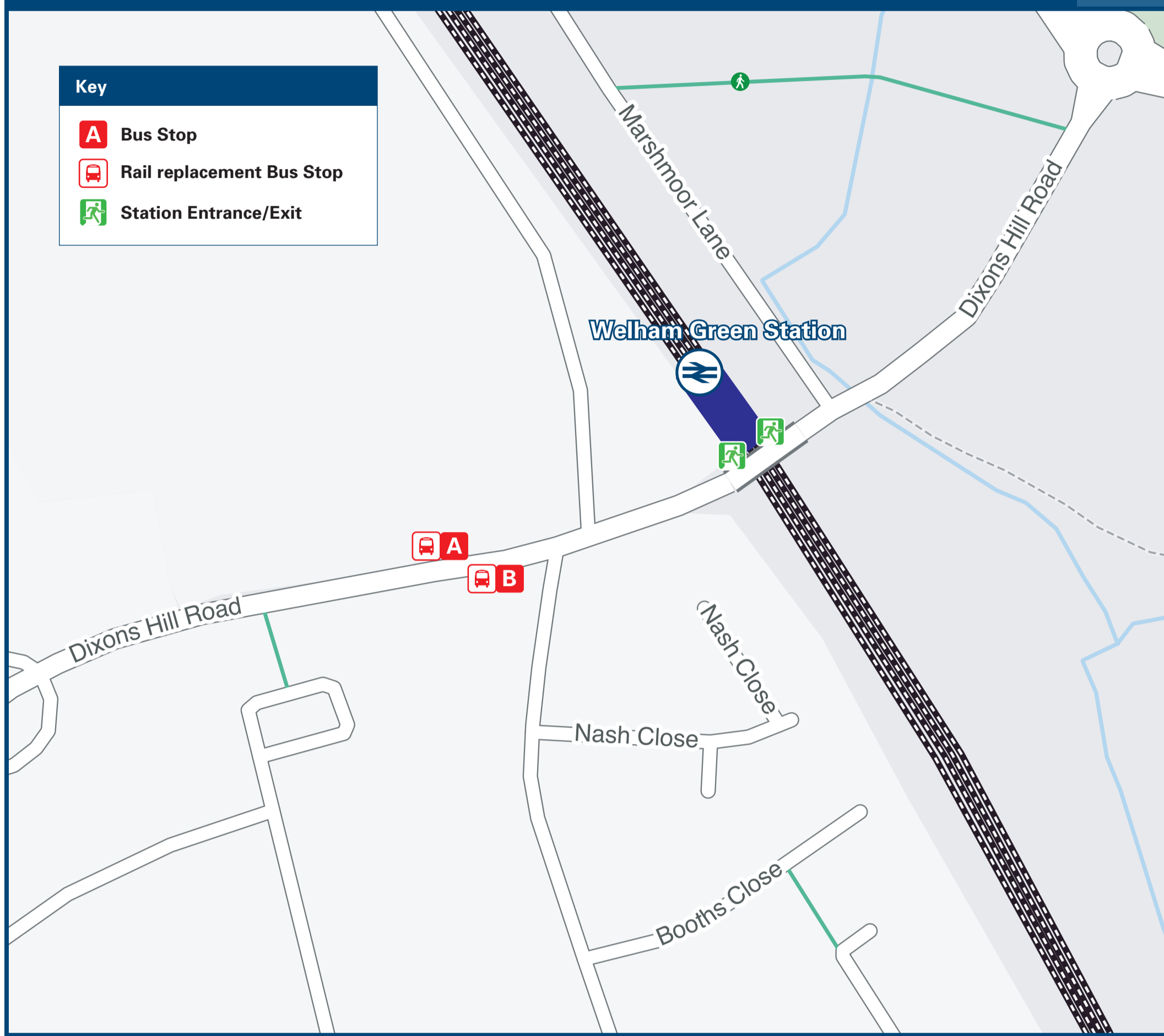




# Welham Green Station

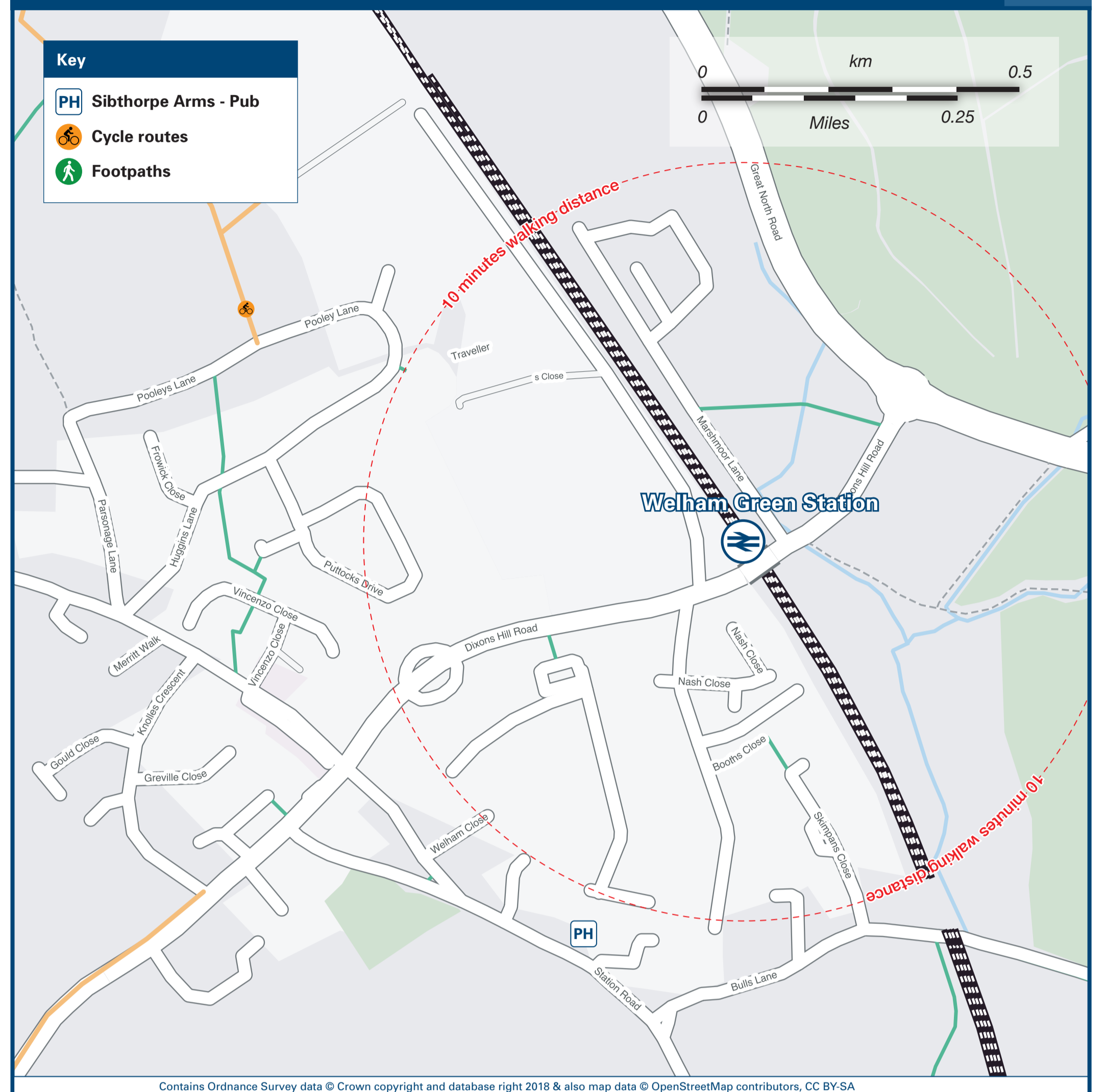
## Onward Travel Information

### Buses



Rail replacement buses depart from stop A towards Welwyn Garden City and Stevenage and from stop B towards Potters Bar and London, stops A and B are located on Dixon Hill Road.

### Local area map



### Main destinations by bus

(Data correct at August 2020)



DESTINATION	BUS ROUTES	BUS STOP
Batford	610	A
Brookmans Park	242*, 610	B
Cheshunt	242*	B
Cuffley (serves Cuffley Station)	242*	B
Harpenden (serves Harpenden Station)	610	A
Hatfield Business Park	610	A
Hatfield Station	242*	A
Hatfield (Town Centre & The Galleria)	242*, 610	A

DESTINATION	BUS ROUTES	BUS STOP
Hatfield (University of Hertfordshire)	610#	A
Little Heath	242*, 610	B
Luton (serves Luton Station)	610	A
Marshalls Heath	610	A
Marshmoor	242*, 610	A
Northaw	242*	B
Oxlease	242*, 610	A
Panshanger	242*	A
Potters Bar	242*, 610	B

DESTINATION	BUS ROUTES	BUS STOP
QE II Hospital (Welwyn Garden City)	242*	A
South Hatfield	242*, 610	A
Swanley Bar	242*, 610	B
Waltham Cross	242*	B
Welwyn Garden City	242*	A
Wheathampstead	610	A

#### Notes

Bus route 610 runs Mondays to Saturdays only.  
For all bus times and days of operation please see bus stop timetables or contact Traveline.  
# Bus route 610 serves both The Forum (College Lane) and de Havilland campuses.  
\* Bus route 242 runs Sundays & Public Holidays only.  
Direct trains operate to this destination from this station.

### Taxis

Welham Green Station has no taxi rank or cab office. Advance booking is essential, please consider using the following local operators: (Inclusion of this number doesn't represent any endorsement of the taxi firm)

**Welham Taxi Hatfield**  
01707 538 008

**AAA Taxis**  
01707 888 888

**24/7 Hatfield**  
01707 538 025

### Further information about all onward travel

<b>Local Cycle Info</b> <a href="http://welhat.gov.uk">welhat.gov.uk</a> <small>For more information about cycle routes.</small>	<b>National Cycle Info</b> <a href="http://sustrans.org.uk">sustrans.org.uk</a> <small>Sustrans is the UK's leading sustainable transport charity.</small>	<b>Bus Times</b> <small>See timetable displays at bus stops.</small>  <a href="http://www.traveline.info">www.traveline.info</a> <b>0871 200 22 33</b> <small>calls cost 12p per minute plus your phone company's access charge</small>	<b>NextBuses</b>  <b>Find the bus times for your stop.</b> <small>Search for a bus stop by entering a postcode, street &amp; town or a stop name &amp; town.</small>	<b>PlusBus</b> <b>plusbus.info</b> <small>A discount price 'bus pass' that you buy with your train ticket. It gives you unlimited bus travel around your chosen town, on participating buses.</small>
--	--	--	---	---

### National Rail Enquiries

<b>Online</b> <a href="http://nationalrail.co.uk">nationalrail.co.uk</a>	<b>NRE App</b> <b>Free National Rail Enquiries app for iOS and Android</b>	<b>Social Media</b> <a href="https://www.facebook.com/nationalrailenq">facebook.com/nationalrailenq</a> <a href="https://twitter.com/nationalrailenq">@nationalrailenq</a>	<b>Alert Me</b> <small>You can sign up to Alert Me messages on the National Rail Enquiries website where you can receive train and platform notifications directly to your smart phone.</small> <a href="http://nationalrail.co.uk/alertme">nationalrail.co.uk/alertme</a>	<b>Contact Centre</b> <b>03457 48 49 50</b> <small>Calls cost no more than calls to geographic numbers (01 or 02) and may be recorded.</small>	<b>PlusBike</b> <a href="http://nationalrail.co.uk/plusbike">nationalrail.co.uk/plusbike</a> <small>For more information.</small>
---	---	--	--	--	---

Great Northern



**National Rail**  
Britain's train companies working together

