



# Perranwell Town Station

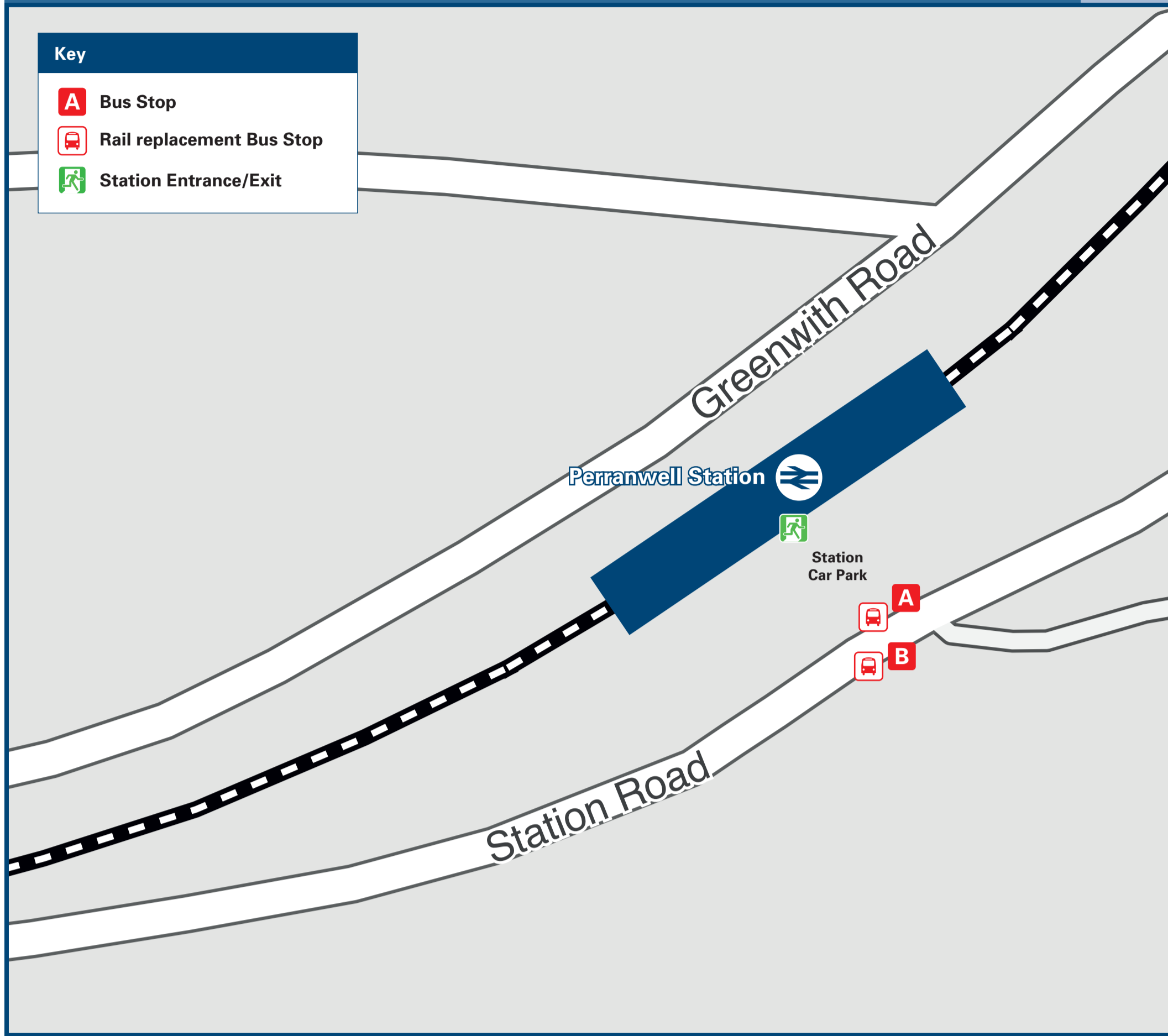
# Onward Travel Information

## Buses



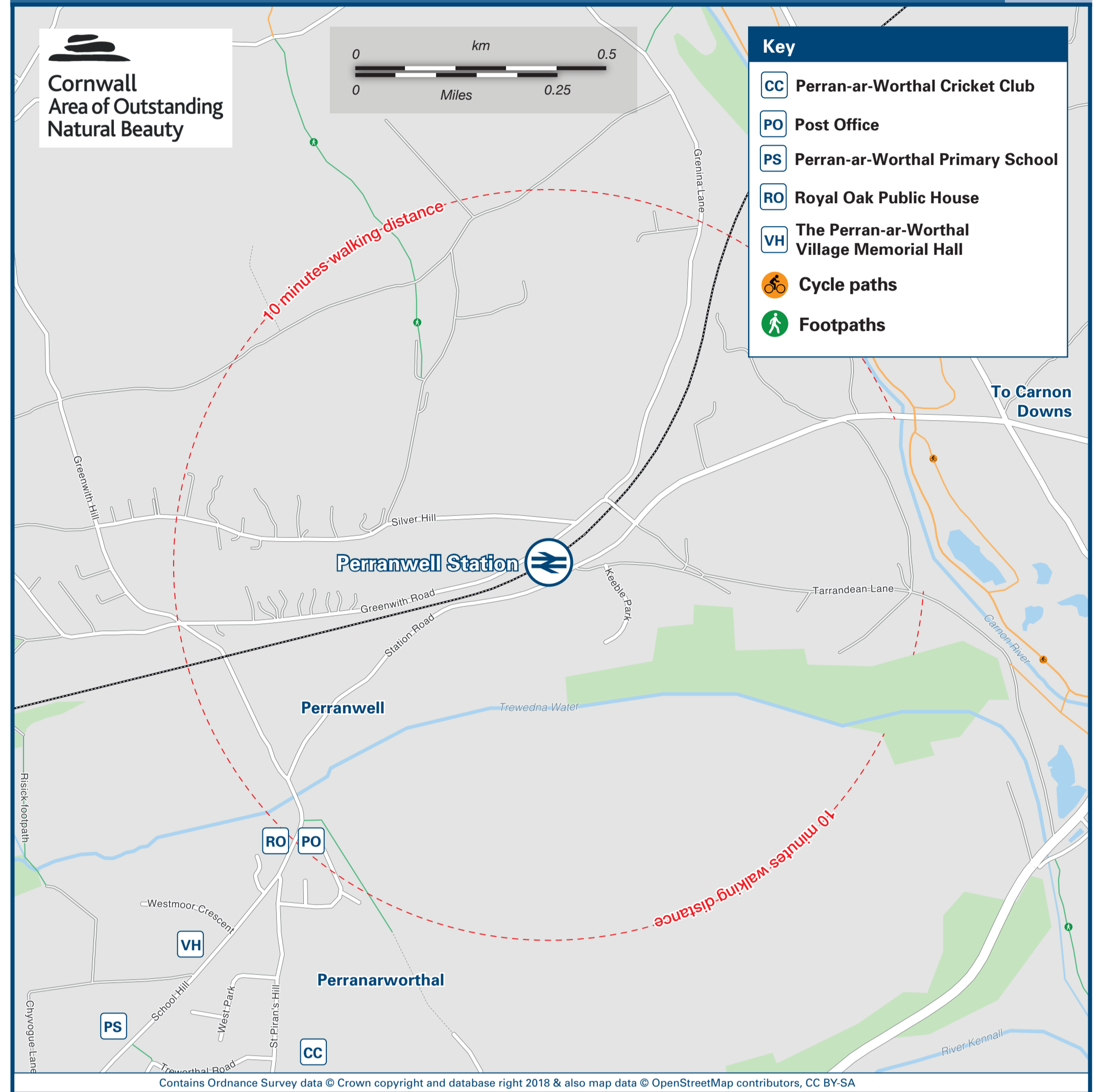
**Key**

- Bus Stop
- Rail replacement Bus Stop
- Station Entrance/Exit



Rail replacement buses/coaches will depart from the main road at the front of the station

## Local area map



## Main destinations by bus

(Data correct at August 2019)



DESTINATION	BUS ROUTES	BUS STOP
Camborne	46	B
Carnon Downs	46, L2	A
Comfort	46	B
Devoran	46	A
Frogpool	46	B
Gwennap	46	B
Helston	L2	B

DESTINATION	BUS ROUTES	BUS STOP
Lanner	46	B
North Country (Trenoweth Estate)	46	B
Perranwell Village	10 - 15 minutes walk from this station (see Local area map)	
Playing Place	46, L2	A
Pool (for Cornwall College)	46	B

DESTINATION	BUS ROUTES	BUS STOP
Pulla Cross	46	B
Redruth	46	B
Stithians	L2	B
Truro	46, L2	A

**Notes**

Bus routes L2 & 46 operate Mondays to Saturdays, only. No Sunday services.

Direct trains operate from this station to Penryn (for Tremough Campus), Penmere, Falmouth Town & Docks stations.

AONB Cornwall AONB: [www.cornwall-aonb.gov.uk](http://www.cornwall-aonb.gov.uk)

Direct trains operate to this destination from this station.

<b>Taxis</b> Perranwell station has no taxi rank or cab office. Advance booking is essential, please consider using the following local operators: (Inclusion of this number doesn't represent any endorsement of the taxi firm)	<b>A2B Cars</b> 01326 378 262	<b>Able Cars (Penryn)</b> 01326 373 007	<b>Acorn Cabs</b> 07831 424 580
---	----------------------------------	--	------------------------------------

<b>Further information about all onward travel</b>			
<b>Local Cycle Info</b> <a href="http://cornwall.gov.uk">cornwall.gov.uk</a> <small>For more information about cycle routes.</small>	<b>National Cycle Info</b> <a href="http://sustrans.org.uk">sustrans.org.uk</a> <small>Sustrans is the UK's leading sustainable transport charity.</small>	<b>Bus Times</b> <small>See timetable displays at bus stops.</small>  <a href="http://www.traveline.info">www.traveline.info</a> 0871 200 22 33 <small>calls cost 13p per minute plus your phone company's access charge</small>	<b>NextBuses</b>  <b>Find the bus times for your stop.</b> <small>Search for a bus stop by entering a postcode, street &amp; town or a stop name &amp; town.</small>
		<b>PlusBus</b> <a href="http://plusbus.info">plusbus.info</a> <small>A discount price 'bus pass' that you buy with your train ticket. It gives you unlimited bus travel around your chosen town, on participating buses.</small>	

<b>National Rail Enquiries</b>					
<b>Online</b> <a href="http://nationalrail.co.uk">nationalrail.co.uk</a>	<b>NRE App</b> Free National Rail Enquiries app for iOS and Android	<b>Social Media</b> <a href="https://facebook.com/nationalrailenq">facebook.com/nationalrailenq</a> @nationalrailenq	<b>Alert Me</b> You can sign up to Alert Me messages on the National Rail Enquiries website where you can receive train and platform notifications directly to your smart phone. <a href="http://nationalrail.co.uk/alertme">nationalrail.co.uk/alertme</a>	<b>Contact Centre</b> 03457 48 49 50 <small>Calls cost no more than calls to geographic numbers (01 or 02) and may be recorded.</small>	<b>PlusBike</b> <a href="http://nationalrail.co.uk/plusbike">nationalrail.co.uk/plusbike</a> <small>For more information.</small>



**National Rail**  
Britain's train companies working together



This poster shows details of popular destinations and main, frequent bus routes. Additional services may run, so please check with Traveline or see posters at local bus stops. Whilst considerable care has been taken to ensure the information contained on this poster is correct and accurate, National Rail cannot accept responsibility for any loss or inconvenience caused by any errors or omissions, or for loss, damage, injury or inconvenience relating to the cancellation, alteration, delay or diversion of a service. For any feedback, please e-mail [comments@onwardtravelposters.com](mailto:comments@onwardtravelposters.com)

Scan this code with your mobile to take this poster with you.