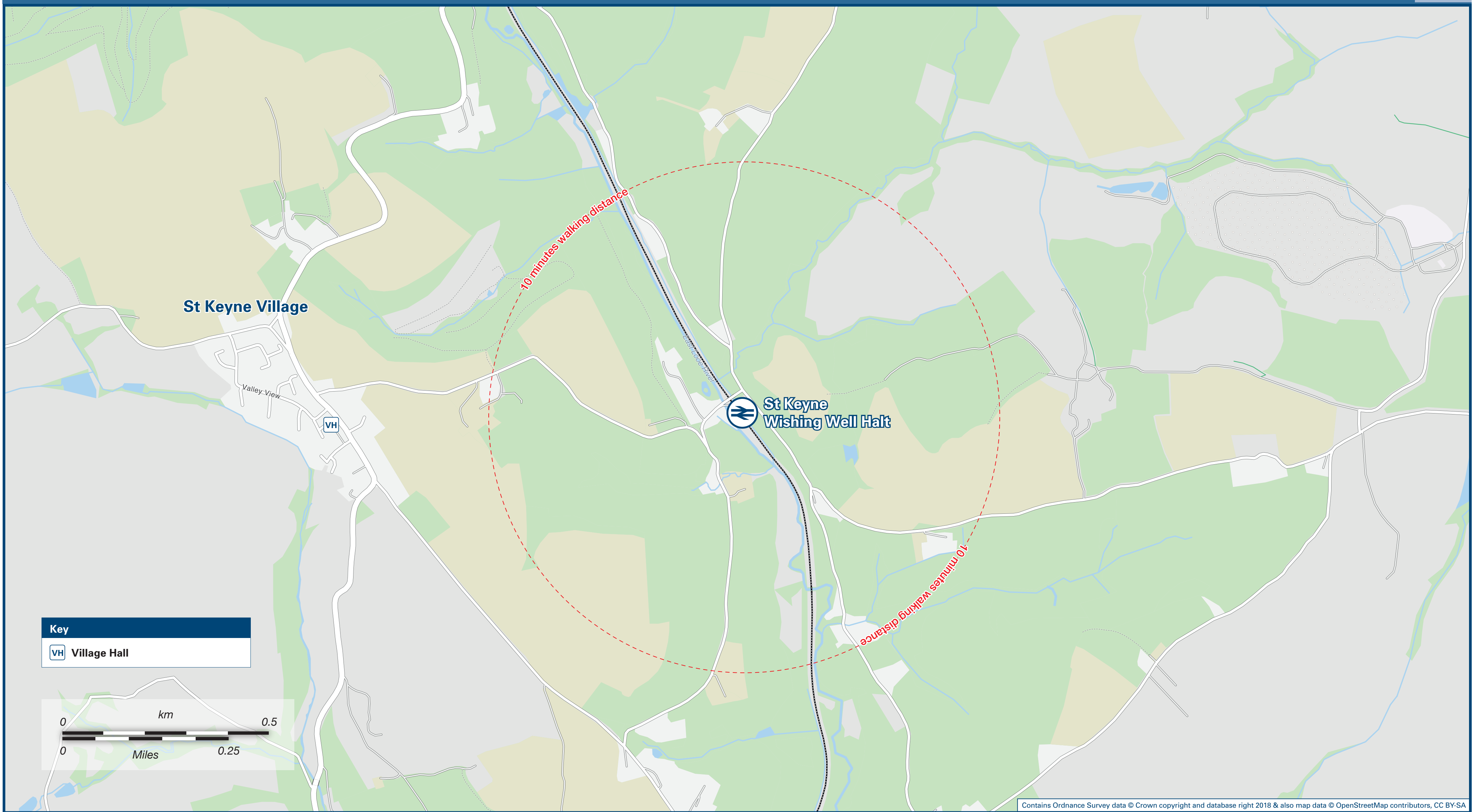




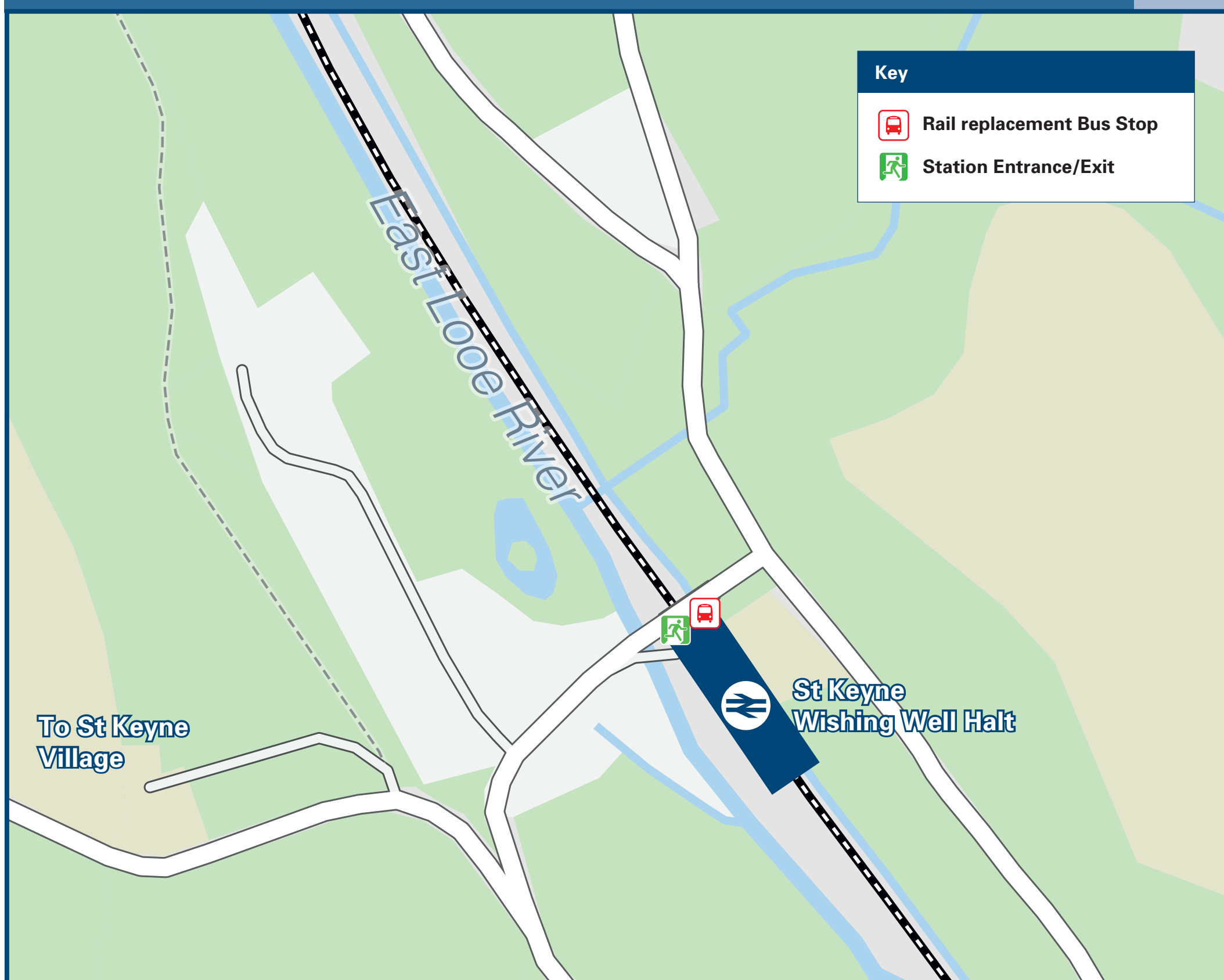
St Keyne Wishing Well Halt Station

Onward Travel Information

Local area map



Station Map



Rail replacement buses/coaches will depart from the road by the station entrance

Information

(Data correct at August 2019)

THERE ARE NO REGULAR BUS SERVICES SERVING ST KEYNE WISHING WELL HALT RAILWAY STATION.

Regular bus services to Duloe, Liskeard, Pelynt, Pensilva and Polperro run from St Keyne's Village Centre, which is approximately 15 minutes walk from the station (see Local area map)

Local taxis are available as listed below: (Inclusion of this number doesn't represent any endorsement of the taxi firm)

Quick Kabs
01579 348 525

Anytime Taxis
070 9310 5106

Town Cabs
01579 344 678

Further information about all onward travel

Local Cycle Info cornwall.gov.uk <small>For more information about cycle routes.</small>	National Cycle Info sustrans.org.uk <small>Sustrans is the UK's leading sustainable transport charity.</small>	Bus Times <small>See timetable displays at bus stops.</small> www.traveline.info 0871 200 22 33 <small>calls cost 13p per minute plus your phone company's access charge</small>	NextBuses Find the bus times for your stop. <small>Search for a bus stop by entering a postcode, street & town or a stop name & town.</small>	PlusBus plusbus.info <small>A discount price 'bus pass' that you buy with your train ticket. It gives you unlimited bus travel around your chosen town, on participating buses.</small>
--	--	--	---	---

National Rail Enquiries

Online nationalrail.co.uk	NRE App Free National Rail Enquiries app for iOS and Android	Social Media facebook.com/nationalrailenq @nationalrailenq	Alert Me <small>You can sign up to Alert Me messages on the National Rail Enquiries website where you can receive train and platform notifications directly to your smart phone.</small> nationalrail.co.uk/alertme	Contact Centre 03457 48 49 50 <small>Calls cost no more than calls to geographic numbers (01 or 02) and may be recorded.</small>	PlusBike nationalrail.co.uk/plusbike <small>For more information.</small>
---	---	--	--	--	---



Whilst considerable care has been taken to ensure the information contained on this poster is correct and accurate, National Rail cannot accept responsibility for any loss or inconvenience caused by any errors or omissions, or for loss, damage, injury or inconvenience caused. For any feedback, please e-mail comments@onwardtravelposters.com

Scan this code with your mobile to take this poster with you.