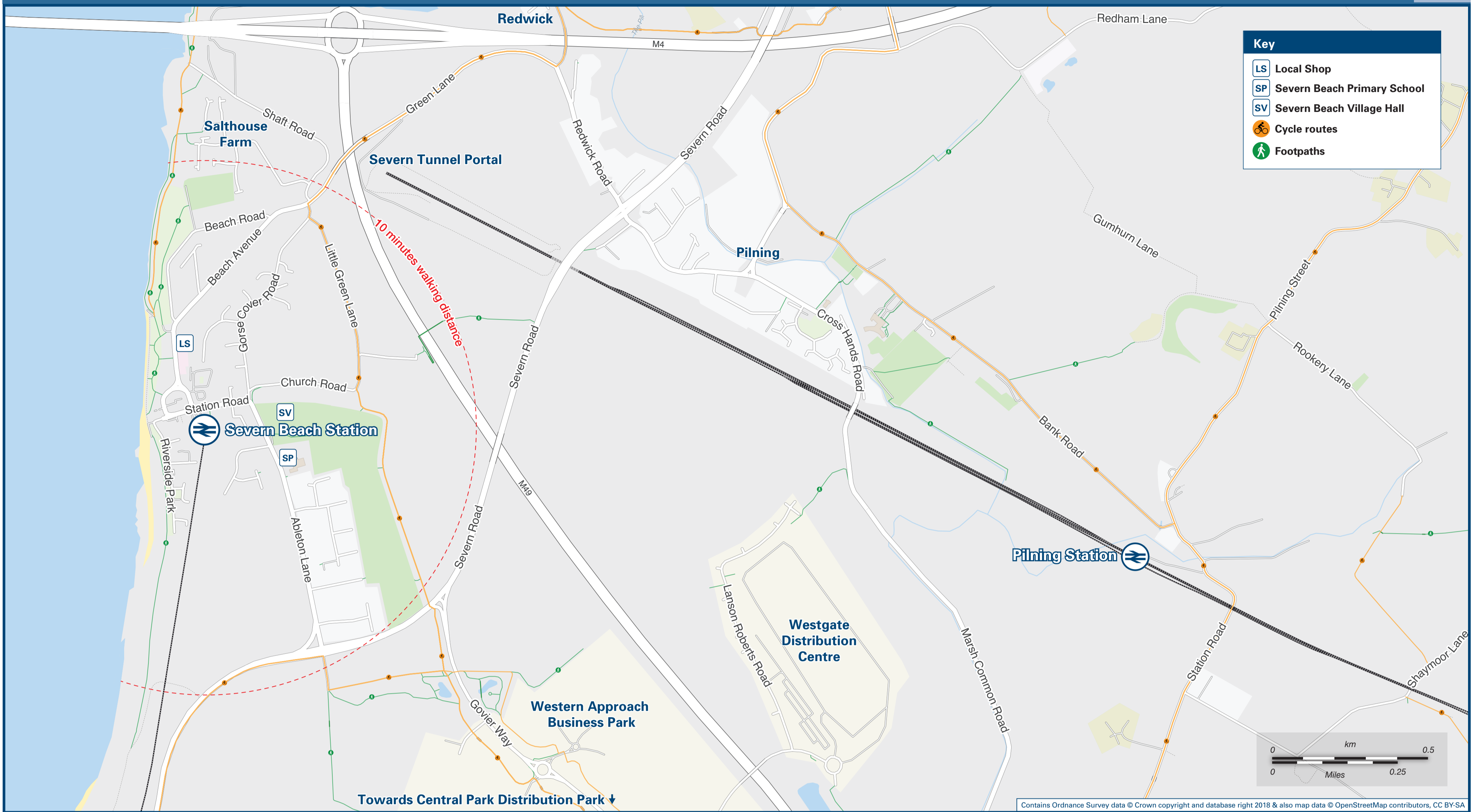




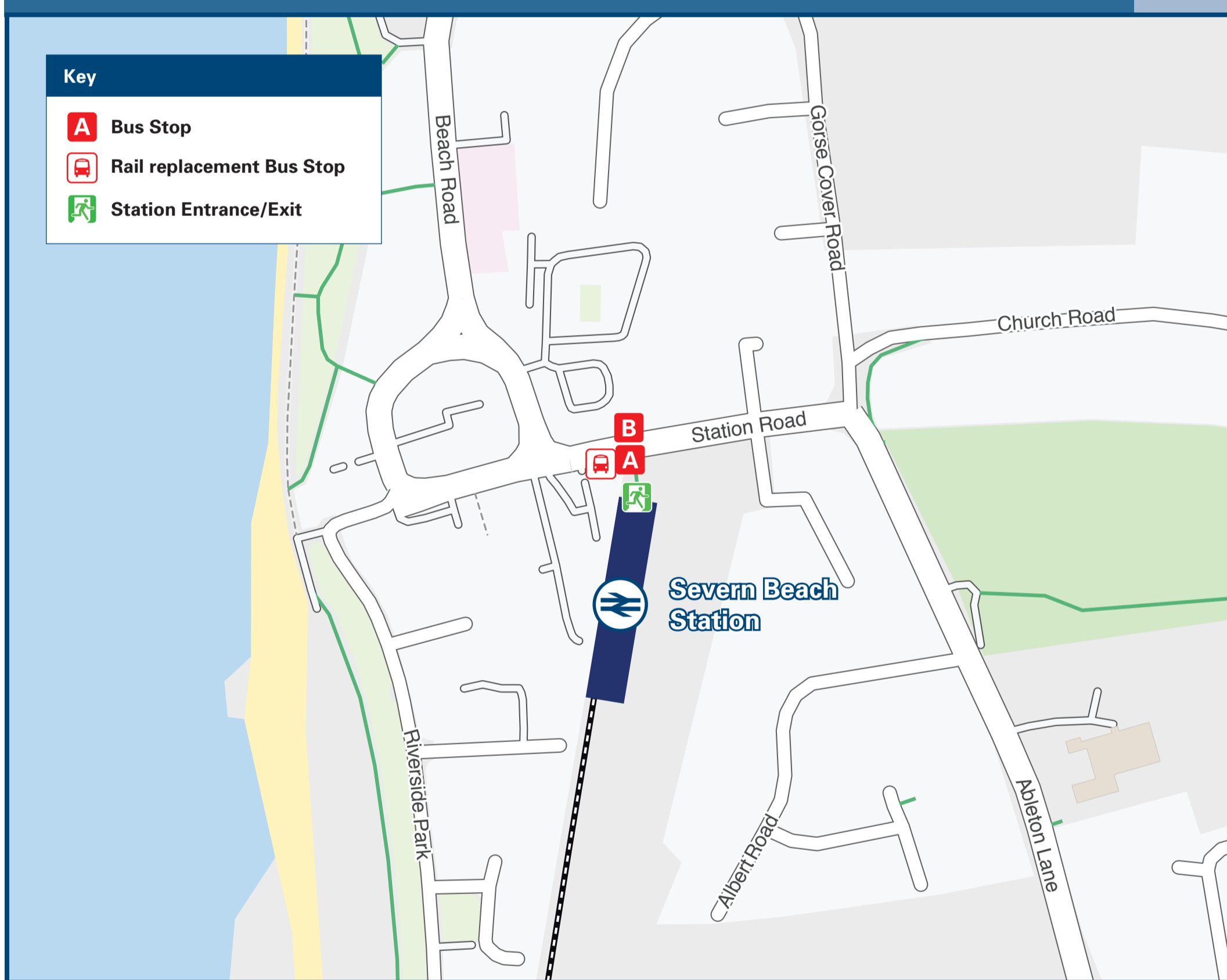
# Severn Beach Station

# Onward Travel Information

## Local area map



## Buses



When it is necessary to run rail replacement bus or taxi services these can usually be found at the bus stop at the end of the platform on Station Road

## Main destinations by bus

(Data correct at September 2019)

DESTINATION	BUS ROUTES	BUS STOP
Bristol Parkway station	625*	A
Cribbs Causeway	625	A
Easter Compton	625	A
Frenchay UWE Campus	625*	A
Little Stoke	625*	A
Patchway	625*	A
Pilning	625	A
Redwick	625	A
Severn Beach (Govier Way - for Business Parks)	625	B
Stoke Gifford	625*	A

**Notes**

Bus route 625 operates a daily service.  
 Bus interchange points at Cribbs Causeway and Frenchay UWE Campus, can be used to access services across a wider area.  
 For bus times and days of operation please see bus stop timetables or contact Traveline  
 \* To this destination, bus route 625 operates Mondays to Saturdays, only. No Sunday service to this destination.

**Taxis**

Severn Beach station has no taxi rank or cab office. Advance booking is essential, please consider using the following local operators: (Inclusion of this number doesn't represent any endorsement of the taxi firm)

**Prestige Cars**  
0117 950 9999

**North Bristol Cars**  
0117 966 6888

**Further information about all onward travel**

<b>Local Cycle Info</b> Travelwest.info For more information about cycle routes.	<b>National Cycle Info</b> sustrans.org.uk Sustrans is the UK's leading sustainable transport charity.	<b>Bus Times</b> See timetable displays at bus stops. www.traveline.info 0871 200 22 33 public transport info	<b>NextBuses</b> mobi Find the bus times for your stop. Search for a bus stop by entering a postcode, street & town or a stop name & town.	<b>PlusBus</b> plusbus.info A discount price 'bus pass' that you buy with your train ticket. It gives you unlimited bus travel around your chosen town, on participating buses.
--	--	---	--	---

**National Rail Enquiries**

<b>Online</b> nationalrail.co.uk	<b>NRE App</b> Free National Rail Enquiries app for iOS and Android	<b>Social Media</b> facebook.com/nationalrailenq @nationalrailenq	<b>Alert Me</b> You can sign up to Alert Me messages on the National Rail Enquiries website where you can receive train and platform notifications directly to your smart phone. nationalrail.co.uk/alertme	<b>Contact Centre</b> 03457 48 49 50 Calls cost no more than calls to geographic numbers (01 or 02) and may be recorded.	<b>PlusBike</b> nationalrail.co.uk/plusbike For more information.
-------------------------------------	--	---	---	--	---



This poster shows details of popular destinations and main, frequent bus routes. Additional services may run, so please check with Traveline or see posters at local bus stops. Whilst considerable care has been taken to ensure the information contained on this poster is correct and accurate, National Rail cannot accept responsibility for any loss or inconvenience caused by any errors or omissions, or for loss, damage, injury or inconvenience relating to the cancellation, alteration, delay or diversion of a service. For any feedback, please e-mail comments@onwardtravelposters.com

Scan this code with your mobile to take this poster with you.